

FixturePoint Welding Table

An Affordable, Easy-to-Use Modular Fixturing System.

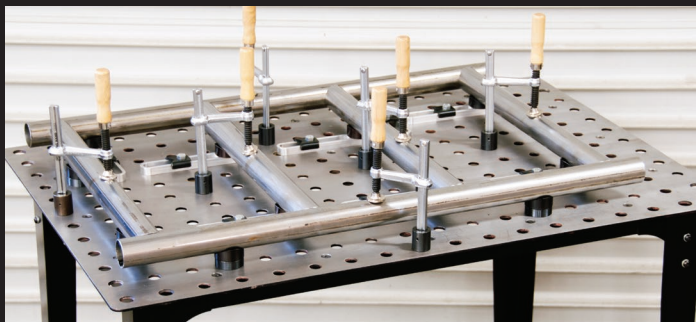
Increase work quality and productivity!

Fixture at ANY POINT on the tabletop.



16 mm holes
.16" thick plate
2" x 2" grid pattern
36" x 24" tabletop

ONE Table, **TWO** Height Settings:
Tabletop: 6-1/4" Height | Leg Frame (incl.): 34" Height



International Patent Pending

© Copyright 2016

Affordable Modular Fixturing

FixturePoint Kits

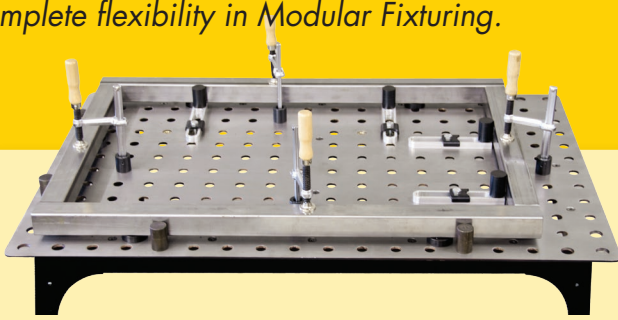
StrongHandTools®
Better Tools. Better Price.

**PACKAGE
DEAL**

Table + Clamps + Modular Fixturing Components

The FixturePoint System is ideal for the set-up of 2D frames. Use the FixturePoint Kits to get started right away, working comfortably, safely, and efficiently for improved work quality, and productivity!

FixturePoint Clamps and Components can be inserted into the 16 mm holes on the 36" x 24" tabletop for complete flexibility in Modular Fixturing.



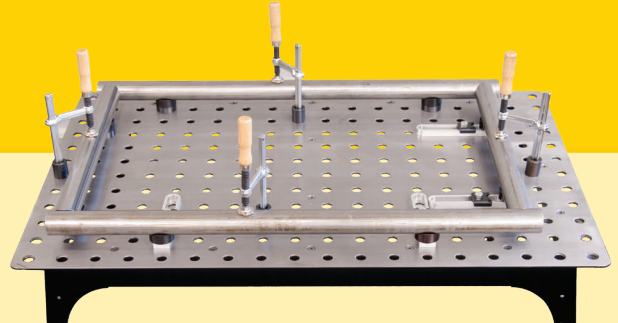
Tabletop Shown

TBHK100

- Complete Modular Fixturing Kit for the set-up of 4x **SQUARE** Tubing frames.

Kit includes:

- | | |
|----------|----------------------------|
| TBH36244 | FixturePoint Welding Table |
| TBK1-28 | Clamps & Components Kit |
| 4 pcs. | Inserta Clamps |
| 8 pcs. | Magnetic Rests |
| 4 pcs. | Positioning Stops |
| 4 pcs. | Inserta Stops |
| 4 pcs. | Stop Bars |
| 4 pcs. | Threaded Adaptors |



Tabletop Shown

TBHK200

- Complete Modular Fixturing Kit for the set-up of 4x **ROUND** Tubing frames.

Kit includes:

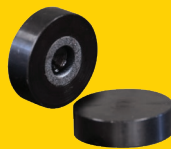
- | | |
|----------|----------------------------|
| TBH36244 | FixturePoint Welding Table |
| TBK2-24 | Clamps & Components Kit |
| 4 pcs. | Inserta Clamps |
| 8 pcs. | V-Blocks |
| 4 pcs. | V-Spacers |
| 4 pcs. | Stop Bars |
| 4 pcs. | Threaded Adaptors |



Inserta Clamps

Part No. UBN105

Insert into any hole on the tabletop for fast hold-down clamping.



Magnetic Rests

Part No. T50737

Place anywhere on the table to elevate and level stock.



Positioning Stops

Part No. TBXS2538

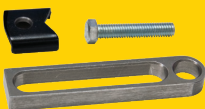
Mount on the tabletop to locate and stop stock.



Inserta Stops

Part No. T64203

Mount on the tabletop to locate and stop stock.



Stop Bars

Part No. T60632

Mount on the tabletop to locate and stop stock. Use with Threaded Adaptors.



Threaded Adaptors

Part No. TXB5204

Mount underneath tabletop to convert any table hole to a 3/8-16 threaded hole.



V-Blocks

Part No. T64216

Designed to hold round parts. Fit into the holes of the FixturePoint table, D-Stop bars and V-Spacers.



V-Spacers

Part No. T64211

Used in conjunction with V-Block.